

RELEASE NOTES



Product	Version	Release Date
MPA1 Mix and Solo Products	2.1E	12/06/20
MPA1 Mix and Solo Products	2.1D	22/04/19
MPA1 Mix and Solo Products	2.1C	NOT RELEASED
MPA1 Mix and Solo Products	2.1B	NOT RELEASED
MPA1 Mix and Solo Products	2.1A	29/11/19
MPA1 Mix and Solo Products	2.0D	02/08/19
MPA1 Mix and Solo Products	2.0C	21/02/19
MPA1 Mix and Solo Products	2.0B	NOT RELEASED
MPA1 Mix and Solo Products	2.0A	29/01/19
MPA1 Mix and Solo Products	1.2.9	5/3/2018
MPA1 Mix and Solo Products	1.2.8	14/11/2017
MPA1 Mix and Solo Products	1.2.7	28/7/2017
MPA1 Mix and Solo Products	1.2.6	30/6/2017

RELEASE NOTES



Contents

- Overview 3
- New Features and Enhancements 4
- Known Limitations 14
- Bug Fixes 22
- Upgrade Procedure for all MPA1 devices 31
- Upgrade Procedure (for DANTE enabled MPA1 devices only) 32
- Technical Support 34

RELEASE NOTES



Overview

MPA1 Release 2.1E contains a number of new features, enhancements and bug fixes.

MPA1 Release software is only applicable for the following products:

MPA1 SOLO SDI	MPA1 MIX SDI	MPA1 MIX SDI V
MPA1 SOLO MADI	MPA1 MIX MADI	MPA1 MIX MADI V
MPA1 SOLO DANTE	MPA1 MIX DANTE	MPA1 MIX DANTE V
MPA1 SOLO 8	MPA1 MIX 8	MPA1 MIX 8 V

Please note that some features, enhancements, and bug fixes may not be applicable to all models.

RELEASE NOTES



New Features and Enhancements

Version 2.1E

MPA1 MIX MADLV

- None

MPA1 SOLO SDI

- None

MPA1 MIX SDI

- None

MPA1 SOLO DANTE

- None

MPA1 MIX DANTE

- None

MPA1 SOLO MAD1

- None

MPA1 MIX MAD1

- None

MPA1 SOLO 8

- None.

MPA1 MIX 8

- None

RELEASE NOTES



Version 2.1D

MPA1 MIX MAD1 V

- Improvements to the webpage, including audio scales.

MPA1 SOLO SDI

- Improvements to the webpage, including audio scales.

MPA1 MIX SDI

- Improvements to the webpage, including audio scales.

MPA1 SOLO DANTE

- Improvements to the webpage, including audio scales.

MPA1 MIX DANTE

- Improvements to the webpage, including audio scales.

MPA1 SOLO MAD1

- Improvements to the webpage, including audio scales.

MPA1 MIX MAD1

- Improvements to the webpage, including audio scales.

MPA1 SOLO 8

- Improvements to the webpage, including audio scales.

MPA1 MIX 8

- Improvements to the webpage, including audio scales.

RELEASE NOTES



Version 2.1A

MPA1 MIX MADI V

Added support for MPA1 MIX MADI V

MPA1 SOLO SDI

- N/A

MPA1 MIX SDI

- N/A

MPA1 SOLO DANTE

- N/A

MPA1 MIX DANTE

- N/A

MPA1 SOLO MADI

- N/A

MPA1 MIX MADI

- N/A

MPA1 SOLO 8

- N/A

MPA1 MIX 8

- N/A

RELEASE NOTES



Version 2.0D

MPA1 SOLO SDI

- N/A

MPA1 MIX SDI

- N/A

MPA1 SOLO DANTE

- N/A

MPA1 MIX DANTE

- N/A

MPA1 SOLO MAD1

- N/A

MPA1 MIX MAD1

- N/A

MPA1 SOLO 8

- N/A

MPA1 MIX 8

- N/A

RELEASE NOTES



Version 2.0C

MPA1 SOLO SDI

- N/A

MPA1 MIX SDI

- N/A

MPA1 SOLO DANTE

- N/A

MPA1 MIX DANTE

- N/A

MPA1 SOLO MAD1

- N/A

MPA1 MIX MAD1

- N/A

MPA1 SOLO 8

- N/A

MPA1 MIX 8

- N/A

RELEASE NOTES



Version 2.0A

MPA1 SOLO SDI

- N/A

MPA1 MIX SDI

- N/A

MPA1 SOLO DANTE

- N/A

MPA1 MIX DANTE

- N/A

MPA1 SOLO MAD1

- N/A

MPA1 MIX MAD1

- N/A

MPA1 SOLO 8

- Initial Release of MPA1 SOLO 8

MPA1 MIX 8

- Initial Release of MPA1 MIX 8

RELEASE NOTES



Version 1.2.9

MPA1 SOLO SDI

- N/A

MPA1 MIX SDI

- N/A

MPA1 SOLO DANTE

- N/A

MPA1 MIX DANTE

- N/A

MPA1 SOLO MADI

- N/A

MPA1 MIX MADI

- N/A

RELEASE NOTES



Version 1.2.8

MPA1 SOLO SDI

- New Improved Audio Meter Display complete with Audio Phase Metering in addition to existing 16 Audio Level Meter Mode.
- New Balance/Pan Control

MPA1 SOLO DANTE

- New Improved Audio Meter Display complete with Audio Phase Metering
- New Balance/Pan Control

MPA1 MIX DANTE

- N/A

MPA1 SOLO MADI

- New Improved Audio Meter Display complete with Audio Phase Metering
- New Balance/Pan Control

MPA1 MIX MADI

- N/A

RELEASE NOTES



Version 1.2.7

MPA1 SOLO SDI

- Support for 3G Level B Sources
- SDI Output connection now supported.
- Support for SNMP

MPA1 SOLO DANTE

- Support for SNMP

MPA1 MIX DANTE

- Support for SNMP

MPA1 SOLO MADI

- Support for SNMP

MPA1 MIX MADI

- Support for SNMP

RELEASE NOTES



Version 1.2.6.

MPA1 SOLO SDI

- Support for 480i and 576i SD-SDI formats now supported on MPA1 SOLO SDI
- HDMI Output now follows selected Input Source on MPA1 SOLO SDI
- HDMI Output now includes two channels of embedded audio from selected source on MPA SOLO SDI

MPA1 SOLO DANTE

- MPA SOLO DANTE products now supports AES-67 (Please see Page 10)
- MPA SOLO DANTE now appears as 'Receiver only' in Dante Controller

MPA1 MIX DANTE

- MPA MIX DANTE products now supports AES-67 (Please see Page 10)
- MPA MIX DANTE now appears as 'Receiver only' in Dante Controller

MPA1 SOLO MADI

- N/A

MPA1 MIX MADI

- N/A

RELEASE NOTES



Known Limitations

Version 2.1D

MPA1 MIX MADLV

- N/A

MPA1 SOLO SDI

- SD-SDI formats are displayed with an aspect ratio of 8:3
- 3G Level-B not supported on HDMI output
- SD-SDI formats not supported on HDMI output

MPA1 MIX SDI

- SD-SDI formats are displayed with an aspect ratio of 8:3
- 3G Level-B not supported on HDMI output
- SD-SDI formats not supported on HDMI output

MPA1 SOLO DANTE

- N/A

MPA1 MIX DANTE

- N/A

MPA1 SOLO MADL

- N/A

MPA1 MIX MADL

- N/A

MPA1 SOLO 8

- N/A

MPA1 MIX 8

- N/A

RELEASE NOTES



Version 2.1A

MPA1 MIX MADLV

- N/A

MPA1 SOLO SDI

- SD-SDI formats are displayed with an aspect ratio of 8:3
- 3G Level-B not supported on HDMI output
- SD-SDI formats not supported on HDMI output

MPA1 MIX SDI

- SD-SDI formats are displayed with an aspect ratio of 8:3
- 3G Level-B not supported on HDMI output
- SD-SDI formats not supported on HDMI output

MPA1 SOLO DANTE

- N/A

MPA1 MIX DANTE

- N/A

MPA1 SOLO MADL

- N/A

MPA1 MIX MADL

- N/A

MPA1 SOLO 8

- N/A

MPA1 MIX 8

- N/A

RELEASE NOTES



Version 2.0D

MPA1 SOLO SDI

- SD-SDI formats are displayed with an aspect ratio of 8:3
- 3G Level-B not supported on HDMI output
- SD-SDI formats not supported on HDMI output

MPA1 MIX SDI

- SD-SDI formats are displayed with an aspect ratio of 8:3
- 3G Level-B not supported on HDMI output
- SD-SDI formats not supported on HDMI output

MPA1 SOLO DANTE

- N/A

MPA1 MIX DANTE

- N/A

MPA1 SOLO MADI

- N/A

MPA1 MIX MADI

- N/A

MPA1 SOLO 8

- N/A

MPA1 MIX 8

- N/A

RELEASE NOTES



Version 2.0C

MPA1 SOLO SDI

- SD-SDI formats are displayed with an aspect ratio of 8:3
- 3G Level-B not supported on HDMI output
- SD-SDI formats not supported on HDMI output

MPA1 MIX SDI

- SD-SDI formats are displayed with an aspect ratio of 8:3
- 3G Level-B not supported on HDMI output
- SD-SDI formats not supported on HDMI output

MPA1 SOLO DANTE

- N/A

MPA1 MIX DANTE

- N/A

MPA1 SOLO MAD1

- N/A

MPA1 MIX MAD1

- N/A

MPA1 SOLO 8

- N/A

MPA1 MIX 8

- N/A

RELEASE NOTES



Version 2.0A

MPA1 SOLO SDI

- SD-SDI formats are displayed with an aspect ratio of 8:3
- 3G Level-B not supported on HDMI output
- SD-SDI formats not supported on HDMI output

MPA1 MIX SDI

- SD-SDI formats are displayed with an aspect ratio of 8:3
- 3G Level-B not supported on HDMI output
- SD-SDI formats not supported on HDMI output

MPA1 SOLO DANTE

- N/A

MPA1 MIX DANTE

- N/A

MPA1 SOLO MAD1

- N/A

MPA1 MIX MAD1

- N/A

MPA1 SOLO 8

- N/A

MPA1 MIX 8

- N/A

RELEASE NOTES



Version 1.2.8

MPA1 SOLO SDI

- SD-SDI formats are displayed with an aspect ratio of 8:3
- 3G Level-B not supported on HDMI output
- SD-SDI formats not supported on HDMI output

MPA1 SOLO DANTE

- N/A

MPA1 MIX DANTE

- N/A

MPA1 SOLO MADI

- N/A

MPA1 MIX MADI

- N/A

RELEASE NOTES



Version 1.2.7

MPA1 SOLO SDI

- SD-SDI formats are displayed with an aspect ratio of 8:3
- 3G Level-B not supported on HDMI output
- SD-SDI formats not supported on HDMI output

MPA1 SOLO DANTE

- N/A

MPA1 MIX DANTE

- N/A

MPA1 SOLO MADI

- N/A

MPA1 MIX MADI

- N/A

RELEASE NOTES



Version 1.2.6

MPA1 SOLO SDI

- SD-SDI formats are displayed with an aspect ratio of 8:3
- SD-SDI formats are not present on the HDMI Output.
- SDI Output connection not supported
- 3G-SDI Level B not supported

MPA1 SOLO DANTE

- N/A

MPA1 MIX DANTE

- N/A

MPA1 SOLO MADI

- N/A

MPA1 MIX MADI

- N/A

RELEASE NOTES



Bug Fixes

Version 2.1E

MPA1 MIX MADLV

- Bug fixes applied to the webpage

MPA1 SOLO SDI

- Bug fixes applied to the webpage

MPA1 MIX SDI

- Bug fixes applied to the webpage

MPA1 SOLO DANTE

- Bug fixes applied to the webpage

MPA1 MIX DANTE

- Bug fixes applied to the webpage

MPA1 SOLO MADL

- Bug fixes applied to the webpage

MPA1 MIX MADL

- Bug fixes applied to the webpage

MPA1 SOLO 8

- Bug fixes applied to the webpage

MPA1 MIX 8

- Bug fixes applied to the webpage

RELEASE NOTES



Version 2.1D

MPA1 MIX MAD1 V

- N/A

MPA1 SOLO SDI

- Improved Audio Sample Rate Conversion, reducing audio artefacts
- Fixed audio distortion when monitoring some SD-SDI audio sources
- Fixed an audio glitch that could occur when monitoring audio embedded in 59.94 SDI sources
- Fixed a lack of audio that could occur on SDI and AES inputs following a power recycle

MPA1 MIX SDI

- Improved Audio Sample Rate Conversion, reducing audio artefacts
- Fixed audio distortion when monitoring some SD-SDI audio sources
- Fixed an audio glitch that could occur when monitoring audio embedded in 59.94 SDI sources
- Fixed a lack of audio that could occur on SDI and AES inputs following a power recycle

MPA1 SOLO DANTE

- N/A

MPA1 MIX DANTE

- N/A

MPA1 SOLO MAD1

- N/A

MPA1 MIX MAD1

- N/A

MPA1 SOLO 8

- N/A

MPA1 MIX 8

- N/A

RELEASE NOTES



Version 2.1A

MPA1 MIX MADLV

- N/A

MPA1 SOLO SDI

- N/A

MPA1 MIX SDI

- N/A

MPA1 SOLO DANTE

- N/A

MPA1 MIX DANTE

- N/A

MPA1 SOLO MADI

- N/A

MPA1 MIX MADI

- N/A

MPA1 SOLO 8

- N/A

MPA1 MIX 8

- N/A

RELEASE NOTES



Version 2.0D

MPA1 SOLO SDI

- Fix to prevent system 'lock-up' that required MPA1 SOLO SDI to be power recycled when switching SDI signals upstream.

MPA1 MIX SDI

- Fix to prevent system 'lock-up' that required MPA1 MIX SDI to be power recycled when switching SDI signals upstream.

MPA1 SOLO DANTE

- N/A

MPA1 MIX DANTE

- N/A

MPA1 SOLO MAD1

- N/A

MPA1 MIX MAD1

- N/A

MPA1 SOLO 8

- N/A

MPA1 MIX 8

- N/A

RELEASE NOTES



Version 2.0C

MPA1 SOLO SDI

- Fixed an issue that could cause embedded audio channels to be muted if incoming audio packets were not spaced correctly.
- Corrected an issue that could cause audio level meters to show a -1dB drop

MPA1 MIX SDI

- Fixed an issue that could cause embedded audio channels to be muted if incoming audio packets were not spaced correctly.
- Improved audio switching when changing between MIX pages.
- Corrected an issue that could cause audio level meters to show a -1dB drop

MPA1 SOLO DANTE

- N/A

MPA1 MIX DANTE

- N/A

MPA1 SOLO MAD1

- N/A

MPA1 MIX MAD1

- N/A

MPA1 SOLO 8

- N/A

MPA1 MIX 8

- N/A

RELEASE NOTES



Version 2.0A

MPA1 SOLO SDI

- N/A

MPA1 MIX SDI

- N/A

MPA1 SOLO DANTE

- N/A

MPA1 MIX DANTE

- N/A

MPA1 SOLO MAD1

- N/A

MPA1 MIX MAD1

- N/A

MPA1 SOLO 8

- N/A

MPA1 MIX 8

- N/A

RELEASE NOTES



Version 1.29

MPA1-SOLO-SDI

- N/A

MPA1-MIX-SDI

- HDMI and SDI Outputs no longer default to SDI Input 1 when switching between Video and Audio Metering modes on the front panel.

MPA1-SOLO-DANTE

- N/A

MPA1 MIX DANTE

- N/A

MPA1 SOLO MADI

- N/A

MPA1 MIX MADI

- N/A

RELEASE NOTES



Version 1.28

MPA1-SOLO-SDI

- Improved detection to changes in input signal format.
- SDI output is now re-clocked
- Loss of a valid video source now displays as a blue screen on the front panel.

MPA1-SOLO-DANTE

- Manually entered channel names entered via the MPA1-SOLO-DANTE Web Page are now properly reflected on the front panel display.

MPA1 MIX DANTE

- Manually entered channel names entered via the MPA1-MIX-DANTE Web Page are now properly reflected on the front panel display.

MPA1 SOLO MADI

- Manually entered channel names entered via the MPA1-SOLO-MADI Web Page are now properly reflected on the front panel display.

MPA1 MIX MADI

- Manually entered channel names entered via the MPA1-MIX-MADI Web Page are now properly reflected on the front panel display.

RELEASE NOTES



Version 1.27

- MPA1 configurations saved in versions up to and including 1.1.4 could be lost when power cycling units upgraded to 1.2.4.

RELEASE NOTES



Upgrade Procedure for all MPA1 devices.

MPA1 Software updates can be downloaded from the following location:

<http://www.tslproducts.com/product-support/audio-products-support/>

1. Download the MPA1 update file from the TSL Products Website using the link shown above
2. Unzip the contents onto a USB memory stick.
3. Place the USB memory stick into the front panel of the MPA1
4. Hold down Select/Menu on the MPA1 for approximately 3 seconds to reveal the Setting Menu
5. Navigate to the 'USB Load/Save' using the Select/Menu controller and Press to Select.
6. Navigate to 'Update Firmware' using the Select/Menu controller and then Press to Select.
7. You will see the message 'Interpreting Update Image' on the front panel, followed by a progress bar.
8. Once the update is completed you will see the message ***** FILE UPDATE COMPLETE***, Please remove USB stick to restart'.**
9. Remove USB memory stick from the front panel of the unit.
10. Unit will now Reboot.

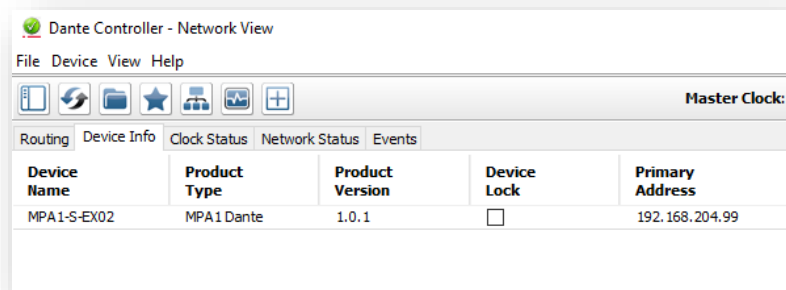
Upgrade Procedure (for DANTE enabled MPA1 devices only)

Having updated your MPA1 Solo Dante and MPA1 Mix Dante devices as detailed above, it may also be necessary to upgrade the MPA1 Solo Dante and MPA1 Mix Dante Firmware to achieve full functionality when used on Dante and AES-67 networks.

DANTE Firmware for use with the MPA1 Solo Dante and MPA1 Mix Dante is available here:

<http://www.tslproducts.com/product-support/audio-products-support/>

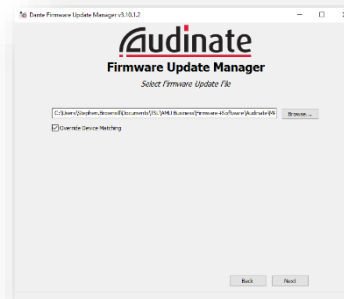
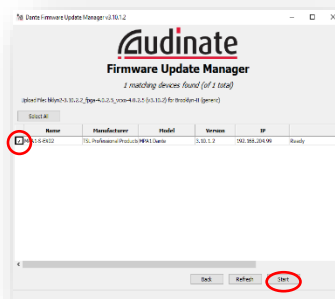
1. Download the MPA1 Dante Firmware update file from the TSL Products Website using the link shown above, this will comprise two files.
2. Download the Dante Firmware Update Manager from <https://www.audinate.com/>
3. Using Dante controller, make a note of the 'Primary Address' belonging to the MPA1 Solo Dante or MPA1 Mix Dante device you wish to update.



4. Using Audinate Firmware Update Manager, select the Ethernet Interface on your PC connected to the same network as the 'Primary Address' belonging to the MPA1 Solo Dante or MPA1 Mix Dante device you wish to upgrade.
5. Click 'Next' in the Audinate Firmware Update Manager
6. Click 'Update Dante Firmware' in the Audinate Firmware Manager
7. Browse to the location of the DANTE Firmware update file downloaded from <http://www.tslproducts.com/product-support/audio-products-support/> whose filename takes the form 'bkly2-xxxx_fpga-x.x.x.x.dnt'

8. Ensure that the 'Override Device Matching' checkbox is checked
9. Click 'Next' in the Audinate Firmware Update Manager
10. Your MPA1 Solo Dante or MPA1 Mix Dante device should now be listed in the Audinate Firmware Manger (see below)
11. Select the checkbox belonging to the MPA1 Solo Dante and/or MPA1 Mix Dante devices you wish to upgrade and click on Start.
12. Wait until the

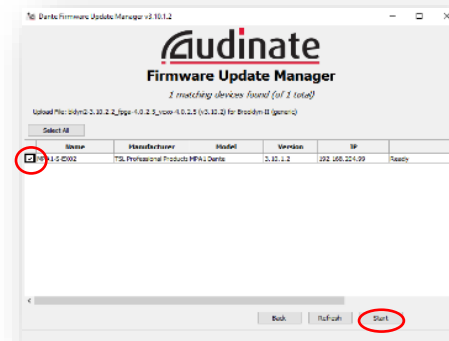
Firmware Update process has completed and reboot your device when instructed by the Audinate Firmware Manager.



RELEASE NOTES

13. Now Browse to the location of the DANTE Firmware update file downloaded from <http://www.tsproducts.com/product-support/audio-products-support/> whose filename takes the form 'MPA1.dnt'
14. Click 'Next' in the Audinate Firmware Update Manager
15. Your MPA1 Solo Dante or MPA1 Mix Dante device should now be listed in the Audinate Firmware Manger (see below)

16. Select the checkbox belonging to the MPA1 Solo Dante and/or MPA1 Mix Dante devices you wish to upgrade and click on Start.



17. Wait until the Firmware Update process has completed and reboot your device when instructed by the Audinate Firmware Manager.

RELEASE NOTES



Technical Support

For technical support, please contact:

<http://www.tslproducts.com/product-support/>