

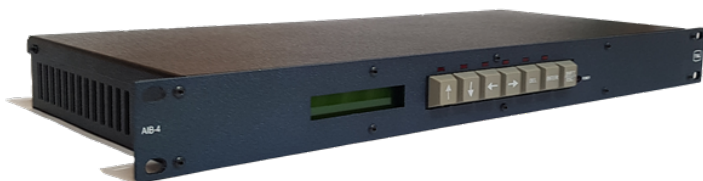
# Anwhere Interface Box

Designed for applications in A/V, industrial, radio, and television broadcasting market segments, the AIB allows users to bridge systems and achieve that key bit of functionality they require without performing

Anywhere Interface Box series offers up to 16 GPI/Os and multiple device control paths, including Ethernet, 2-way DTMF and dial-up modem, for device management and monitoring flexibility.

Whether its remote control, interfacing old and new kit, or simplifying device monitoring for projects large and small, the AIB Range allows you to:

- Turn on a GPI to send a Serial or Ethernet message / command. Turn off the GPI to send another.
- Fire a GPI to send a TCP, UDP, SNMP, or HTTP message.
- Receive Serial or Ethernet data to turn on/off a GPI Output.
- Receive Ethernet data and generate a replacement Serial command.
- Trigger a simple or complex sequence of actions from a GPI.
- Use a Watchdog timer to transmit an SNMP
- Monitor SNMP Traps and turn on GPI Outputs (GPO).



## The AIB Range

All AIBs include:

- Fast Ethernet, 100baseT full-duplex
- RS232/RS422 serial port
- Generate & Monitor ASCII / Hex Command data
- SNMP Messaging Transmit & Receive
- Monitor SNMP Traps

### AIB-2

- 8- GPI Inputs/Outputs
- 8- Home Page Tally Buttons

### AIB-3

- GPIs: 16 opto-isolated inputs
- GPOs: 16 isolated relay contact closures
- Redundant Power Supplies (optional)

### AIB-4

Cut shows remotely from your home facility. Transport GPIs and On-Air Tallies in to the field wherever you need them – across cities, states, even continents.

- GPIs: 16 opto-isolated inputs
- GPOs: 16 isolated relay contact closures
- DTMF Transmit and Receive: Single and Multi-digit Sequences
- Telecom approved Dial-up Data Modem
- Redundant Power Supplies (optional)

Contact our International Sales Team today to find out more:

[www.tslproducts.com](http://www.tslproducts.com)

E. SALES@TSLproducts.com | T. +44 1628 564 610 / +1 818 898 3380



Audio. Control. Power.