



MPA1-MIX Range



TSL's award-winning **MPA1-MIX** range delivers intuitive multi-channel audio monitoring and mixing, with acoustically tuned speakers for class-leading clarity. Featuring a video confidence display, web interface, and external control support, it's designed for seamless use in live production environments.



Trusted by operators and engineers worldwide, **MPA1-MIX** range is perfect for live multi-channel audio monitoring. It enables up to 16 unique stereo monitoring mixes to be defined, stored, and quickly recalled for multiple program configurations via its intuitive v-shaped front panel design, inspired by global production experts NEP.

A wide range of audio signal types can be handled and presented with an instant 'at-a-glance' notification of up to 16 audio mixes from its front panel display. A configurable audio monitoring mix is available from internal speakers, headphone jack, and line outputs. 8 dedicated rotary controls allow fast

adjustment of audio levels, muting, or soloing sources, while SDI versions allow switching between audio level meters and video monitoring modes.

Ideal for today's audio-over-IP networks, **MPA1-MIX** supports 64 channels of Dante, AES67, Ravenna, or ST 2110-30, plus an additional 64 channels of MADi audio, managing up to 128 input sources. Dual 1GbE ports provide ST 2110-30 primary/secondary networks with ST 2022-7 packet redundancy. Comprehensive web page and SNMP support enable remote configuration, control and monitoring.

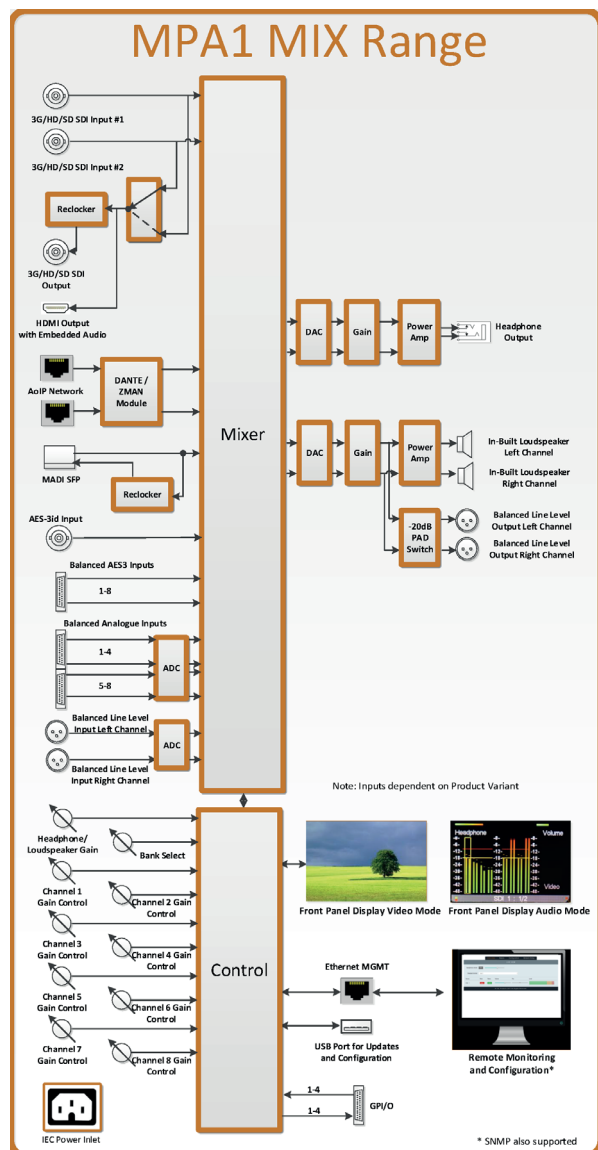


KEY FEATURES

- Supports wide range of signal inputs (SD/HD/3G-SDI) with 16-channel audio de-embedding, balanced or unbalanced AES audio, MADi, Dante, Ravenna, ST 2110-30 AoIP (inc. ST2022-7 class B), and balanced analog audio
- Create and instantly recall up to 16 monitoring mixes with 'scroll to select' with 8 dedicated rotary controls for level adjustment per mix
- Selectable front panel display for audio levels, pan/balance, or SD/HD/3G-SDI video confidence
- Audio output via high-quality internal speaker, headphone with muting options, and 2 balanced analog line outputs for external speakers
- Ethernet Web interface enables remote control and configuration of key parameters
- Features IEC mains input with low power consumption
- Front panel USB for saving and recalling configurations and software updates
- Compact 100mm unit depth, ideal for desk mounting

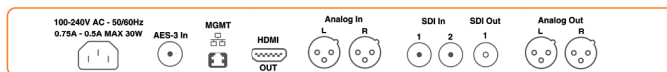


BLOCK DIAGRAMS



REAR PANEL VIEWS

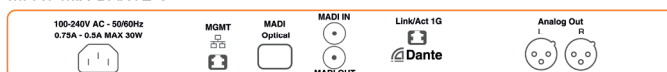
MPA1-MIX-SDI / MPA1-SOLO-SDI



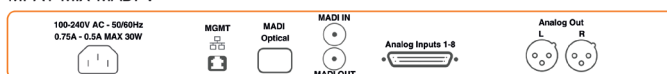
MPA1-MIX-NET-V-R



MPA1-MIX-DANTE-V



MPA1-MIX-MADI-V



MPA1-MIX-8 / MPA1-SOLO-8



Can't find the model/spec you require?
Consider the SAM-Q or PAM range. [Click here.](#)

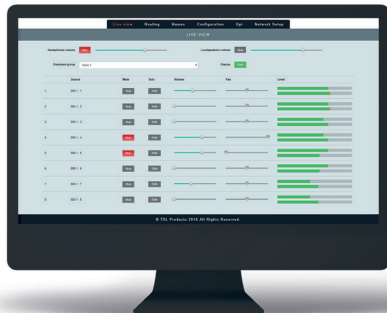
SPECIFICATIONS

HEIGHT	1RU	SDI INPUT	3G/HD/SD-SDI (SMPTE 424M, 292M, 259M)
DIMENSIONS	483mm x 45mm x 100mm	AoIP input	ST 2110-30 with ST 2022-7 option, Dante, AES67, Ravenna
POWER	85-264V ~ 50/60Hz, 0.75A – 0.5A Max 30W	AES-3id	SMPTE 276M
WEIGHT	1.4 kg	ANALOG INPUTS	>60k Ohms
DISPLAY	Single 2.4"	ANALOG OUTPUTS	Stereo, Balanced Fixed or Variable Level
AUDIO MIXES	16	SIGNAL TO NOISE RATIO	72dB (+4dBu input level, THD+NA weighted)
UPGRADES	VIA USB	PEAK ACOUSTIC OUTPUT	90dB @ 1foot
UNIT CONTROL	SNMP, Webpage	FREQUENCY RESPONSE	40Hz to 20kHz +/- 1dB

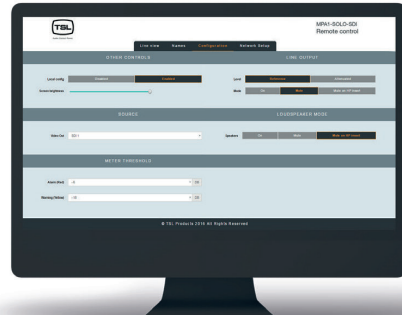


WEBPAGE CONTROL AND MONITORING

Looking for the MPA1-SOLO Range? [Click here.](#)



LIVE VIEW



CONFIGURATION VIEW

MPA1-MIX VERSIONS

1RU audio mixing monitor. Front panel display including 16 Level Meters with adjustable gain via numbered front panel encoders, custom Source Names and Video confidence display (SDI versions only). Featuring 16 audio mixes accessible using scroll to select function, Internal Loudspeakers and Front Panel Headphone Output, Internal PSU, Web-interface and SNMP Control.

Signal Type	Order Code	Description	Key Benefits
AES/Analog Audio	MPA1-MIX-8-V	1RU audio mixing monitor, 8 x AES Inputs and 8 x Balanced Analogue inputs. 1 x Balanced Stereo Output, 8 x GPIO.	Great for live audio only monitoring applications needing to simultaneously monitor both analog and digital audio sources
SD/HD/3G-SDI	MPA1-MIX-SDI-V	1RU SDI audio mixing monitor, 2 x 3G/HD/SD SDI Inputs, 1 x AES3id input and 2 x Balanced Analogue inputs. 1 x Balanced Stereo Output, 1 x Re-clocked 3G/HD/SD SDI Output, HDMI Output.	Ideal for handling multiple SDI sources with embedded audio for live multi-channel audio monitoring applications
ST 2110-30 with NMOS and ST 2022-7 packet redundancy, AES67 and Ravenna AoIP	MPA1-MIX-NET-V-R	1RU AoIP audio mixing monitor, supporting ST 2022-7 IP network topologies. 2 x ST 2110-30/AES67/Ravenna AoIP input ports via 1Gbit ethernet and 1 x optional MADI SFP input. 1 x balanced stereo output.	Ideal for low bandwidth multi-channel audio monitoring in IP production environments with ST 2022-7 network topologies using.
Dante AoIP inc. Dante Domain Manager support	MPA1-MIX-DANTE-V	1RU Dante/AES67 and MADI audio mixing monitor, 1 x DANTE Input, 1 x optional MADI SFP input, 1 x Balanced Stereo Output. Dante Domain Manager Compliant.	Compatible with Dante/AES67 streams for multi-channel audio monitoring in AoIP production environments.
MADI audio	MPA1-MIX-MADI-V	1RU MADI audio mixing monitor, 1 x MADI coaxial input, 1x optional MADI SFP input and 4 x Stereo Analogue inputs. 1 x Balanced Stereo Output.	Useful for handling MADI audio sources along with analog talkback or local contribution feeds.

Like what you see? Explore our [Control Solutions](#) and [Power Distribution & Management](#), or [contact us](#) to optimise your workflows.